

Introverted Intellectual Physical

Typical Quote: "Give me a lever and a place to stand and I can move the world" – Anon

Introverted Intellectual Physicals ("introverted IPs" for short) have the Intellectual mental function (including critiquing/ analysing) most conscious in their mind, and therefore they are most aware of it and in control of this function. Their Physical mental function (including details/ practicality) is also likely to be very conscious by the time they are adult. The other two mental functions S (Spiritual-including creativity/ originality) and E (Emotional-including harmonising/ sympathising)) are most in their sub-conscious and therefore they may not naturally be so competent at managing these.

General Summary

Introverted IPs are fundamentally "performers" but as intellectual their areas of interest tend to be mechanical rather than artistic like those of introverted Emotional Physicals. Introverted IPs always seem to know what they're doing when it comes to physical or mechanical obstacles -- but the whole chain of events presents a confusing and paradoxical picture to an outsider.

Introverted IPs are equally difficult to understand in their need for personal space, which in turn has an impact on their relationships with others. They need to be able to "spread out"-- both physically and psychologically -- which generally implies encroaching to some degree on others, especially if they decide that something of someone else's is going to become their next project. They are generally quite comfortable, however, with being treated the same way they treat others -- at least in this respect. They generally need a lot of flexibility to be as spontaneous as they feel they must be, and tend to become very resistant to someone who threatens their lifestyle. Introverted IPs are masters of the one-liner, often showing flashes of humour in the most tense situations; this can result in their being seen as thick-skinned.

Introverted IPs may have trouble with rote and abstract classroom learning, which tend not to be good measures of their actual intelligence. They tend, sometimes with good reason, to be highly sceptical of its practical value. Working as paramedics or firefighters can fulfil the introverted IP need to live on the edge; they are at their best in a crisis, where their natural disregard for rules and authority structures allows them to focus on and tackle the emergency at hand in the most effective way. They are so keenly aware of the physical world and their own kinaesthetics, they quickly ascertain what physical short-cuts they can safely take.

Key Attributes

Investigator (MBTI Equivalent: ISTP)

(Style: Scientist first, Adventurer second)
5.9% of Australian Population*



Typical Strengths:

They are typically independent and self-confident, and are not threatened by conflict or criticism. They are analytical, practical and realistic artisans. Good trouble-shooters, they uncover the details often missed by others.

Typical Development Areas:

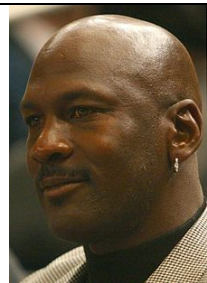
Because they thrive on flexibility, action, and excitement they may stir things up to create it. They are usually able to improve their planning significantly and may have difficulty being decisive. They may appear stubborn and may need to consider others' feelings more.

“Possible Shadow Side” (Mental Function deepest in the Sub-Conscious Mind)

The Emotional function of introverted IPs is deepest in their sub-conscious and when they become stressed can often “operate” unconsciously in an all-or-nothing manner. When stressed they can ignore their emotional side completely and become totally task oriented and people insensitive. Ineffective with their emotional domain, they can also act-out in displays of emotions, or through delinquent and risky actions.

Famous Introverted IPs

Common Frustration for Others: They may nit-pick too much.



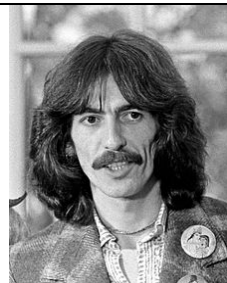
Michael Jordan

American former professional basketball player



Katharine Hepburn

American Actress



George Harrison

Beatles musician and singer songwriter



Bruce Lee

Martial artist and action film actor

* See MBTI® Data Archive Project: *Psychological Type Research Unit* – Sample over 22000 Australians 2010