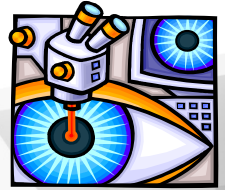


Choose **1)** if you are more focussed/energized internally, and **2)** if more focussed/energized externally (*bearing in mind you will be both, but not equally so*)

## 1) Spiritual Introverted (*more reflective*) – The Seer



*Key characteristics common for your style:*

- You view situations from multiple perspectives and dream up new ideas and insights
- You favor meaningful connections using visions, images and symbols
- You foresee the future
- You recognize the impacts of symbols
- You prefer uncovering deep patterns

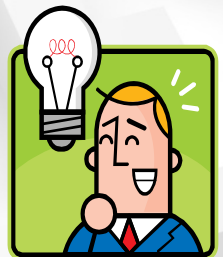
Your decisions are usually based on systems and systemic thinking

The question you typically ask “How can I find the answer in me?”

You try to avoid feeling..... **HOPELESS**

Overall you are energized by and foresee the future.

## 2) Spiritual Extraverted (*more responsive*) – The Ideator



*Key characteristics common for your style:*

- You imagine connections and possibilities in the external world
- You come up with creative point of view
- You favor brainstorming ideas
- You focus on inferring what can be done
- You prefer improving the situation

Your decisions are usually based on maximising the number of options

The question you typically ask “What could we do with that?”

You try to avoid feeling..... **BORED**

Overall you brainstorm ideas and find new ways.

*\* Figures from MBTI Australian Data Archive Project*